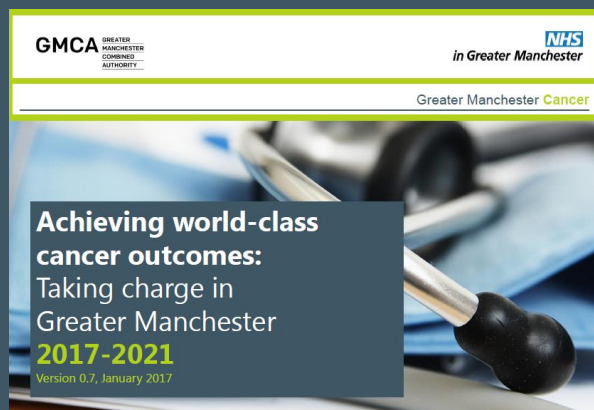


Greater Manchester Cancer: Achieving World-Class Cancer Outcomes in GM

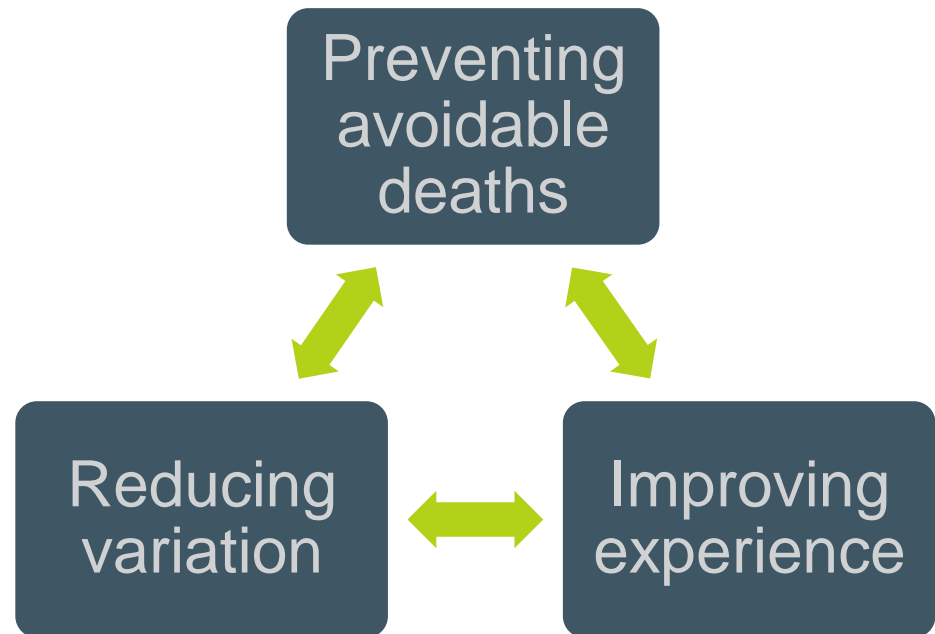
Claire O'Rourke
Senior Manager,
Greater Manchester Cancer



Recovery Package Event
2nd November 2017



1. Vision to achieve **world class cancer outcomes and experience for people in GM**
2. Delivery of cancer services that are **sustainable and offer value for money.**
3. GM **First region to have an agreed whole system cancer plan** approved in Feb 2017



Where should we focus our efforts?

- **‘Lives Saved’** (prevention/ earlier diagnosis)
- **Quality of Life** during and after treatment
- **Better experience of care**
- **Variation in care**



- 1. We will reduce adult smoking rates to 13% by 2020**
 One in five adults in Greater Manchester still smoke nearly a decade after smoking was banned in enclosed public places in England.
- 2. We will increase one-year survival to more than 75% by 2020**
 Our rate of survival one year after cancer diagnosis is rising but further substantial improvement will need additional focus on detecting cancers at an earlier stage.
- 3. We will prevent 1,300 avoidable cancer deaths before 2021**
 We have some of the highest rates of avoidable cancer deaths in the country – matching the national average will save hundreds of lives.
- 4. We will offer class-leading patient experience, consistently achieving an average overall rating of 9/10 in the national survey from 2018**
 Our patients report good experience compared to other conurbations with an average overall rating of 8.76 in 2015, but there remains room for improvement.
- 5. We will consistently exceed the national standard for starting treatment within 62 days of urgent cancer referral**
 Working as a system we have met the 62-day standard for a number of years, but we want to keep reducing the amount of time people wait to start their treatment
- 6. We will ensure that the Recovery Package is available to all patients reaching completion of treatment by 2019**
 The Recovery Package is a combination of important interventions that, when delivered together, can greatly improve the outcomes and coordination of care.



150 more
people each
year alive at
one year



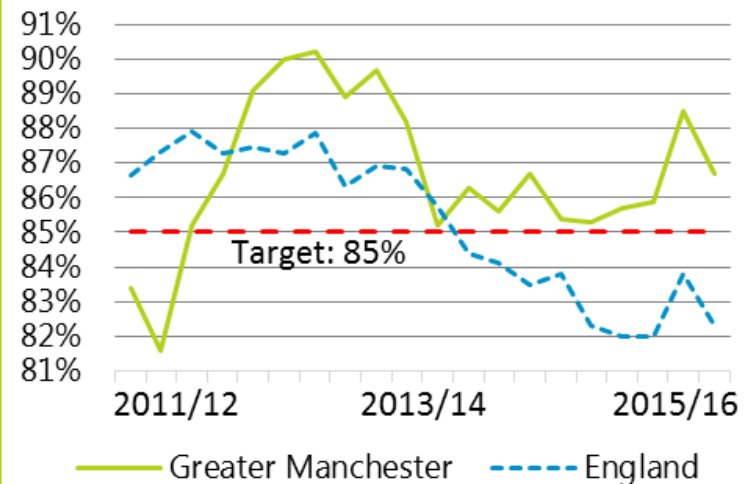
115 more people
each year alive at
five years

System achievements

The best cancer patient
experience of
comparable
conurbations



62-day waiting time performance





Clinical networks & pathway boards



User involvement

**Third
Sector**

System engagement

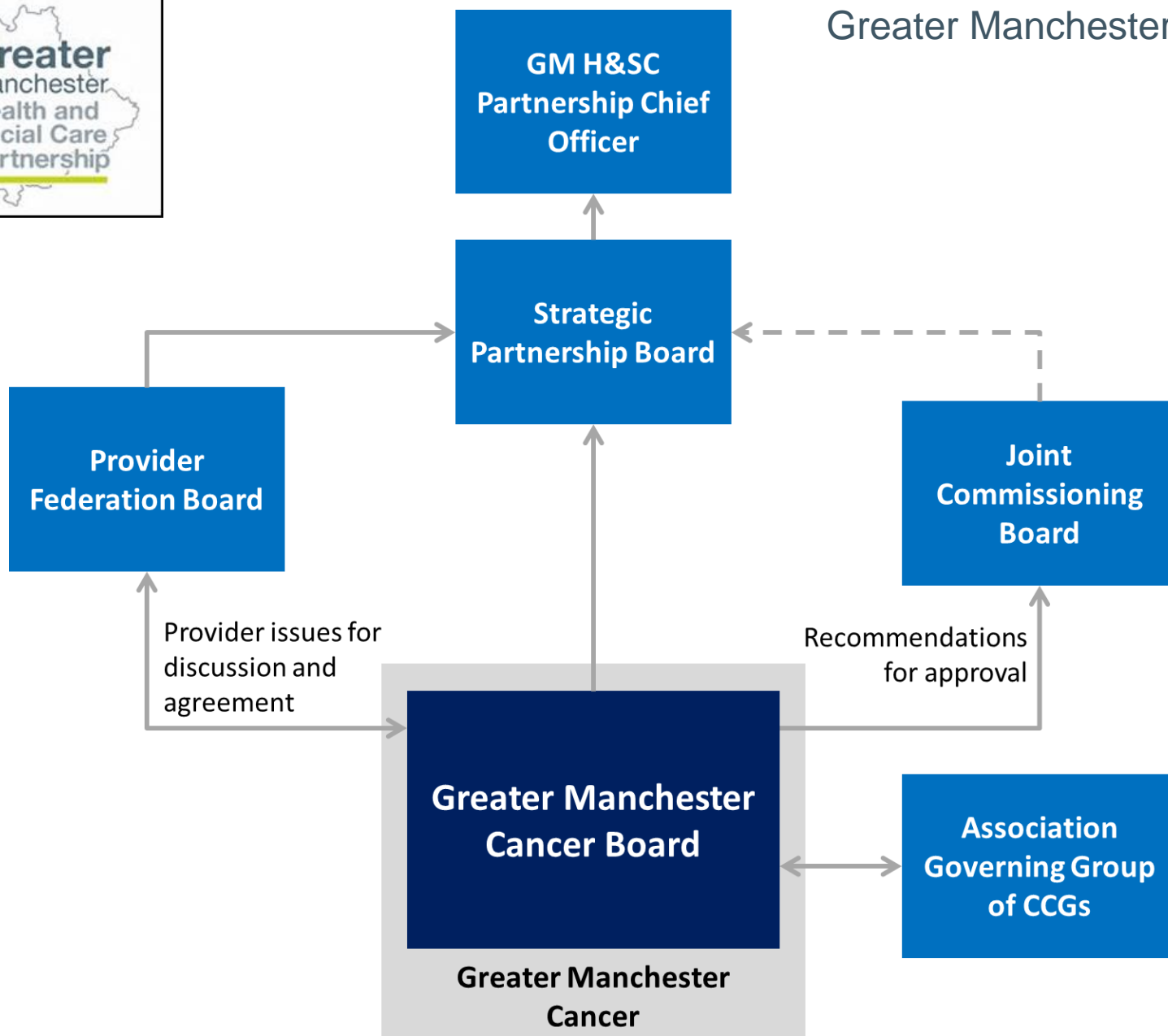
System successes

National recognition
& leadership in cancer

NEW CARE MODELS:

Vanguards - developing a blueprint for
the future of NHS and care services

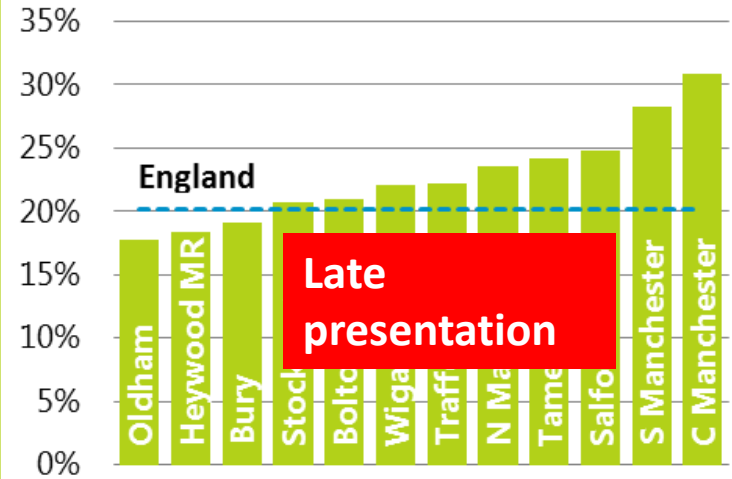






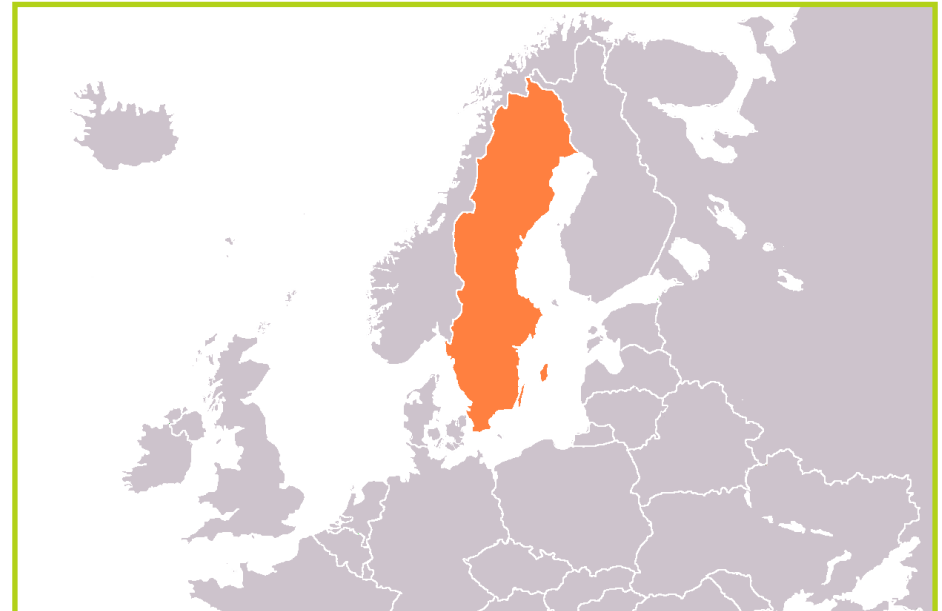
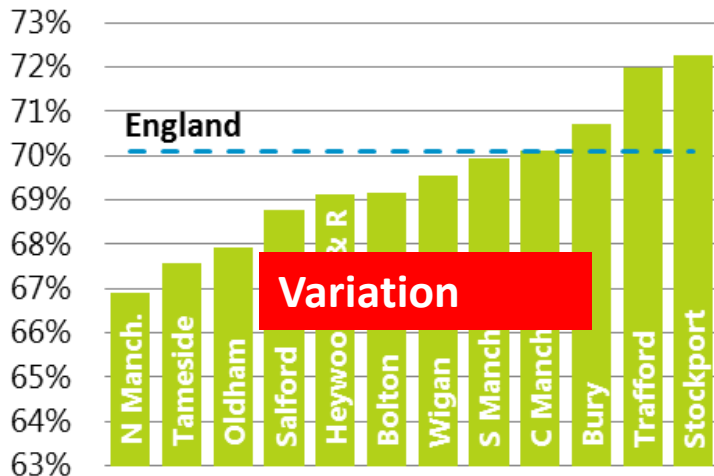
1 in 7

2014/15 A&E presents. by CCG



System challenges

2013 one-year survival by CCG

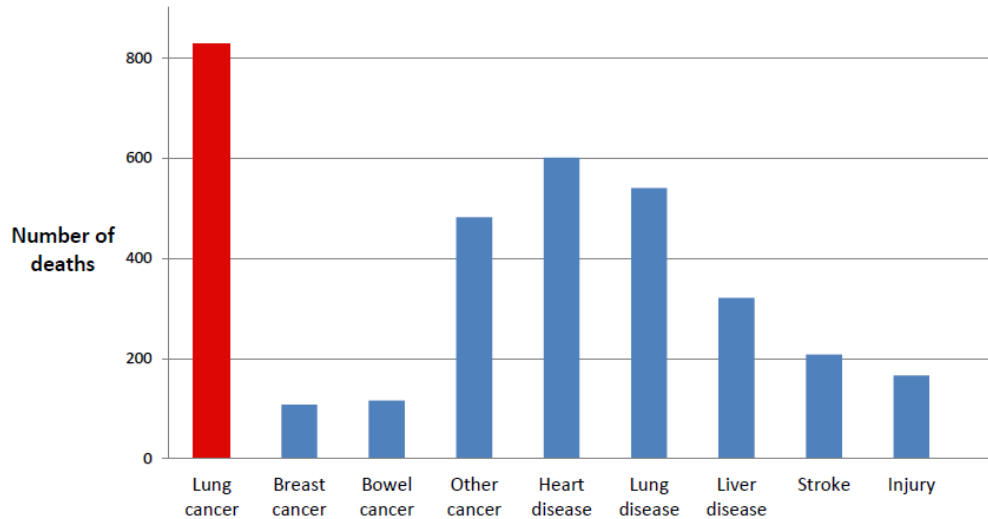


High Impact Priorities in GM

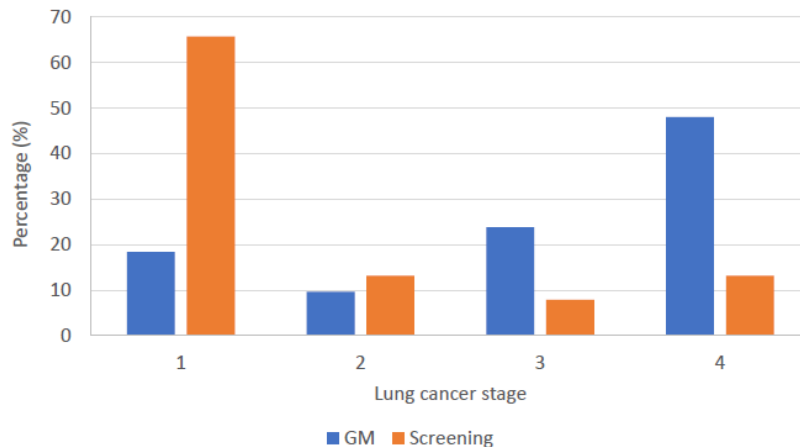
1. Tobacco Control Plan
2. Lung Cancer screening project
3. Bowel screening/ straight to test / Lynch
4. Cancer Prevention Drugs
5. 20,000 'cancer champions'
6. ERAS +
7. Best practice timed pathways
8. Digital pathology
9. Recovery package/ Enhanced Supportive Care
10. 'Gateway C'

**Clear predominant
focus on
prevention or
earlier diagnosis**

Causes of premature death: Manchester (age under 75; 2011-13)



Earlier and better diagnosis - screening



**WE'VE
CHANGED
LIVES**

GM Cancer Plan:
Prevent 1300
avoidable cancer
deaths

**5 fold reduction in stage 4
disease; 79% early stage
disease; 1 cancer per 33 scans**

- Milestones achieved monitored through GM Cancer board
- Implementation plan with clear accountability
- Regular reports from cancer intelligence service include progress on key objectives

- GM Cancer Plan investment paper approved at GM cancer Board Sept 2017

[illegible]

Importance of the Recovery Package

“The plan seems very heavy on the prevention and detection and targets for cancer but very, very light on living with and beyond cancer.

Just because someone is diagnosed with stage iv cancer it doesn't always mean that they are classed as terminal .

So the bit missing is the living with cancer.

I don't feel there is enough focus on this stage.

People are living longer with cancer, we should not be ignored.”

Breast Cancer patient from the user involvement team.

.

Thank you!

Claire.orourke@christie.nhs.uk